



Manor Farm

Origin Green
In partnership with
Enviroeye Consulting Engineers



Enviroeye Engineering Ltd
Consulting Engineers

Micheál Galvin
BSc(Eng) MSc CEng MIEI



Manor Farm – Vertical SUPPLY CHAIN

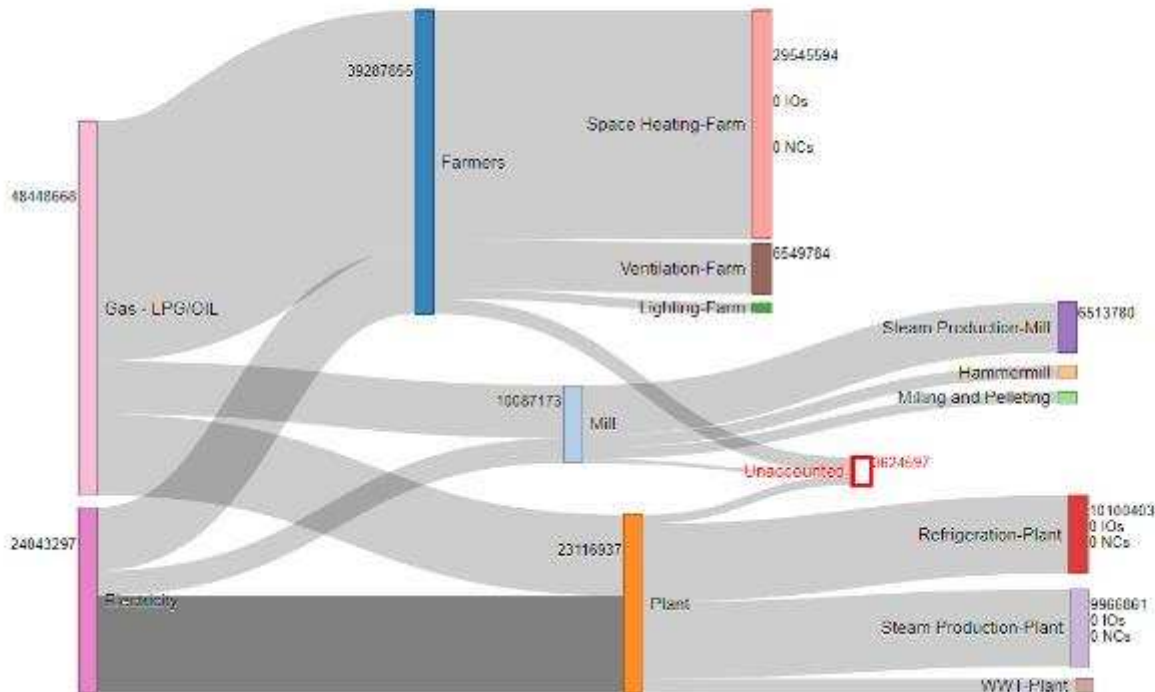
Energy Planning

Energy (kWh) Cost (£)

Period: 01/01/2016 to: 31/12/2016

Energy Sources
£ 72491965 kWh

Energy Uses
£ 68867368 kWh



Energy Planning gives an overview of the site from energy sources to which SEU's are the most energy intensive. It also shows any energy that is unaccounted for.

Energy Uses

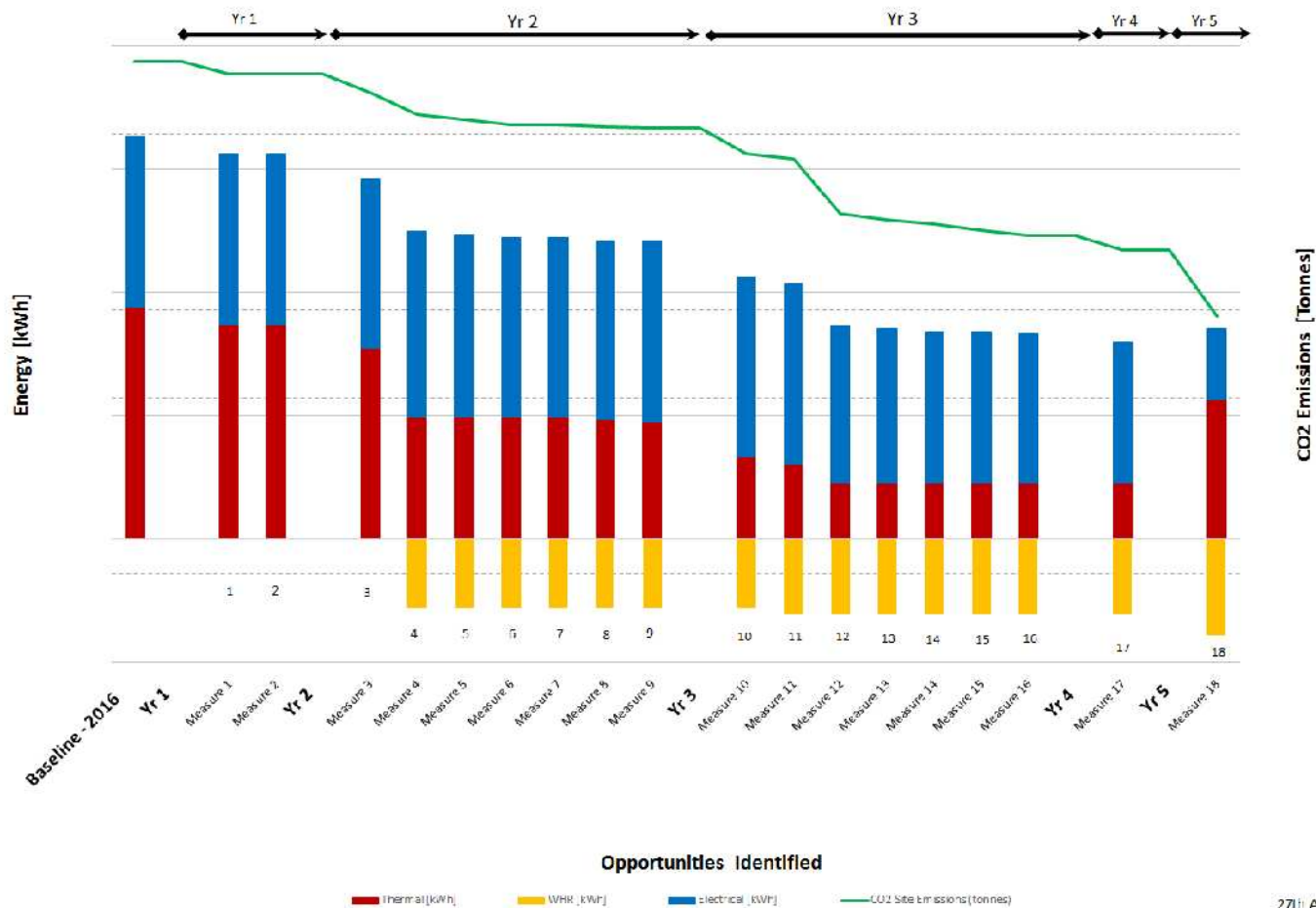
Create Energy Use

Title	SEU	kWh	Location
Space Heating-Farm	🔥	29545594	Manor Farm
Refrigeration-Plant	❄️	10100403	Manor Farm
Steam Production-Plant	🔥	9966061	Manor Farm
Ventilation-Farm	💡	6549784	Manor Farm
Steam Production-Mill	🔥	6513780	Manor Farm
WWT-Plant	♻️	1893826	Manor Farm
Hammormill	⚙️	1615282	Manor Farm
Milling and Pelleting	⚙️	1453753	Manor Farm
Lighting-Farm	💡	1228085	Manor Farm

1 - 9 / 9



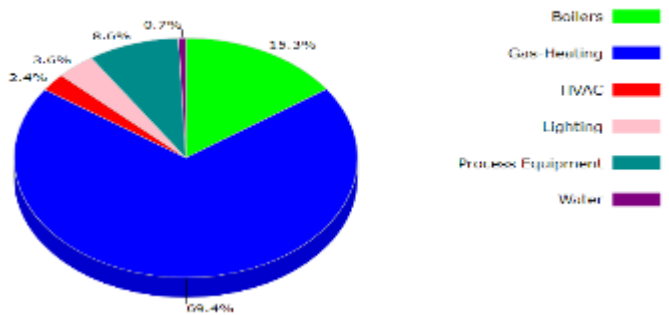
Manor Farm – The Sustainable Strategy(Route)



Manor Farm – Co2 – What are we doing about it ?

Objectives & Targets

IO Estimated FOR REVIEW Cost Savings



Objectives & Targets can be entered and tracked to see how the improvement opportunity is progressing.

Objectives & Targets | EnPIs O&Ts | Benchmark Data

	2014		2015		2016		2017		2018		2019		2020	
	kWh	Objective	kWh	Objective	kWh	Objective	kWh	Objective	kWh	Objective	kWh	Objective	kWh	Objective
Total		68867368												
▶ Space Heating-Farm - Manor Farm		29545594		50% Heat Recovery						0	0.00	14772797	0.00	
▶ Refrigeration-Plant - Manor Farm		10100403		Save 10% on refrigeration						1010040	0.00	0	0.00	
▶ Steam Production-Plant - Manor Farm		9966861		Save 20%						0	0.00	1750000	0.00	
▶ Ventilation-Farm - Manor Farm		6549784		Save 5% on ventilation						327489	0.00	0	0.00	
▶ Steam Production-Mill - Manor Farm		6513780		Save 20% on steam production						0	0.00	1450000	0.00	
▶ WWT-Plant - Manor Farm		1893826		Save 5%						94691	0.00	0	0.00	
▶ Hammersmill - Manor Farm		1615282		Save 5%						80764	0.00	0	0.00	
▶ Milling and Pelleting - Manor Farm		1453753		Save 5%						72688	0.00	0	0.00	
▶ Lighting-Farm - Manor Farm		1228085		Save 40% on lighting in farms						491234	0.00	0	0.00	



On The Farm – Energy Balance- One House

- 1 Kg of Feed GIVES 0.6 Kgs of LIVE Weight
 - FCR = 1.6
 - 1 Bird @ 2.2 Kgs = 3.5 Kgs of feed

Production Unit

- 50,000 Broilers = 175 tonnes @ 4t/acre = 43 Acres of space

Inputs:

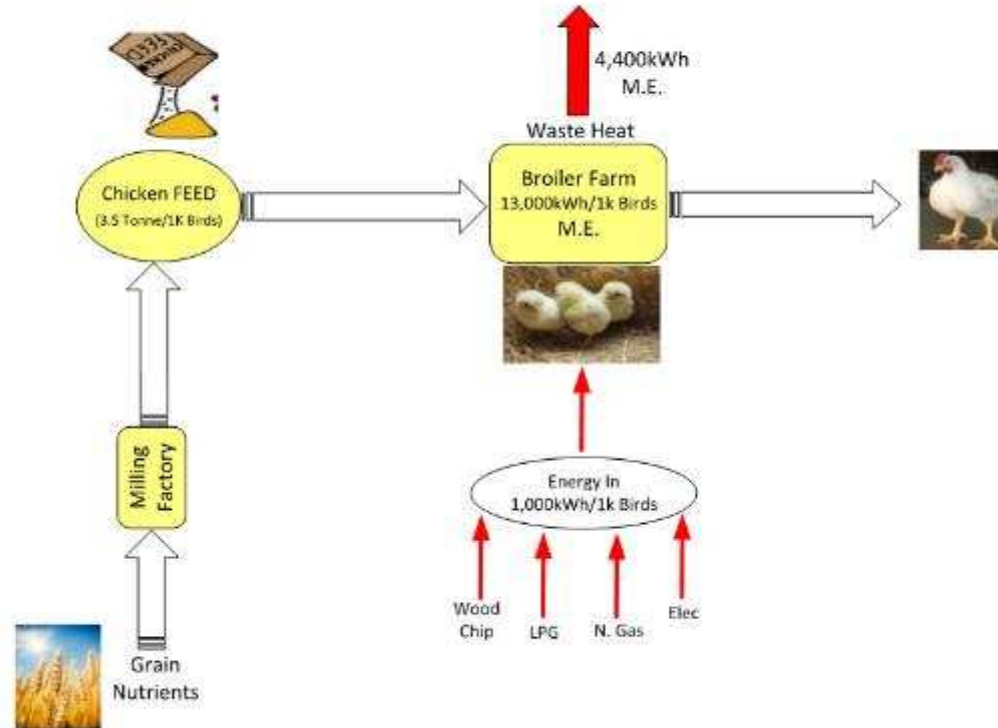
- Feed = 175 tonnes x 16 MJ/Kg = 823,429 kWh / 81,000 Oil [litres]
- Energy-Space Heating = 30,000 kWh or 3,000 litres of Oil
- Energy-Electricity = 10,000 kWh or 2,500 litres of Oil

Outputs:

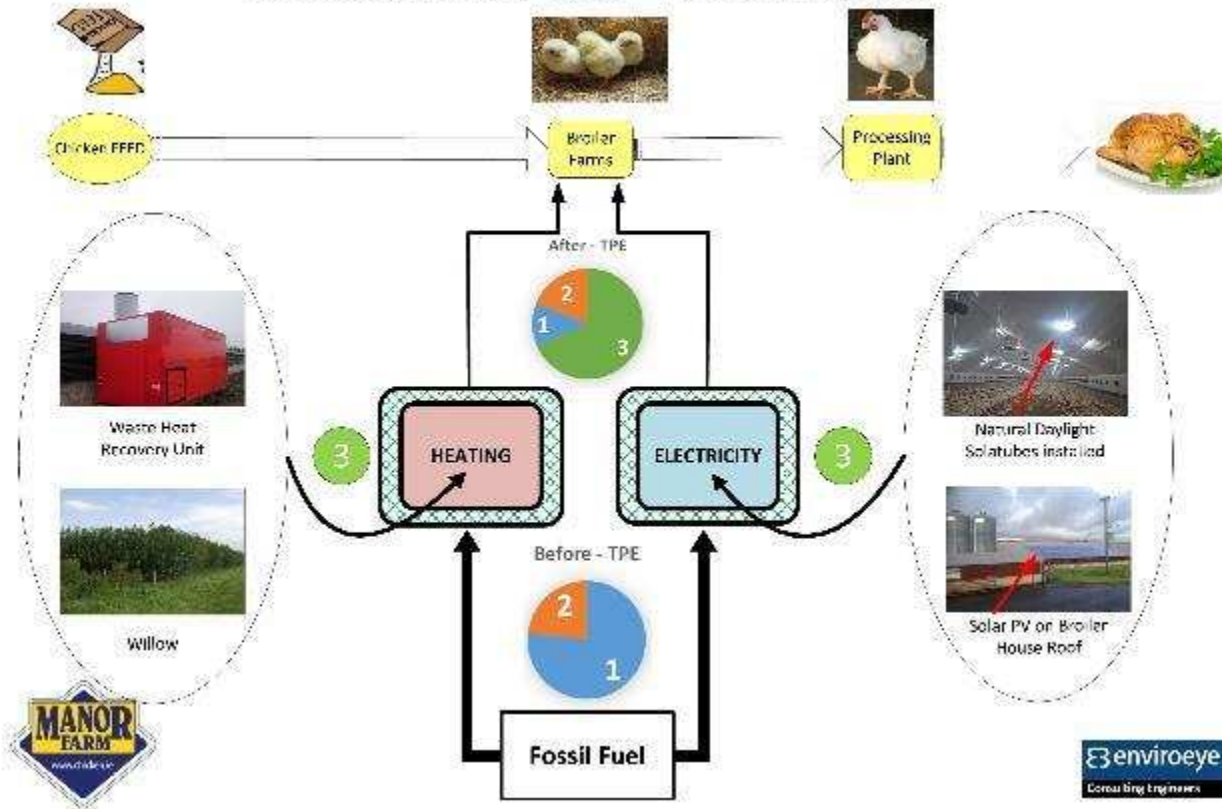
50 Tonnes litter (digested feed - 13 MJ/kg) per 50k Bird/Batch + Drum Sticks !!!!

[Litter Energy is 191,176 kWh & Site Input Energy 40,000 kWh = 20% (Est)]





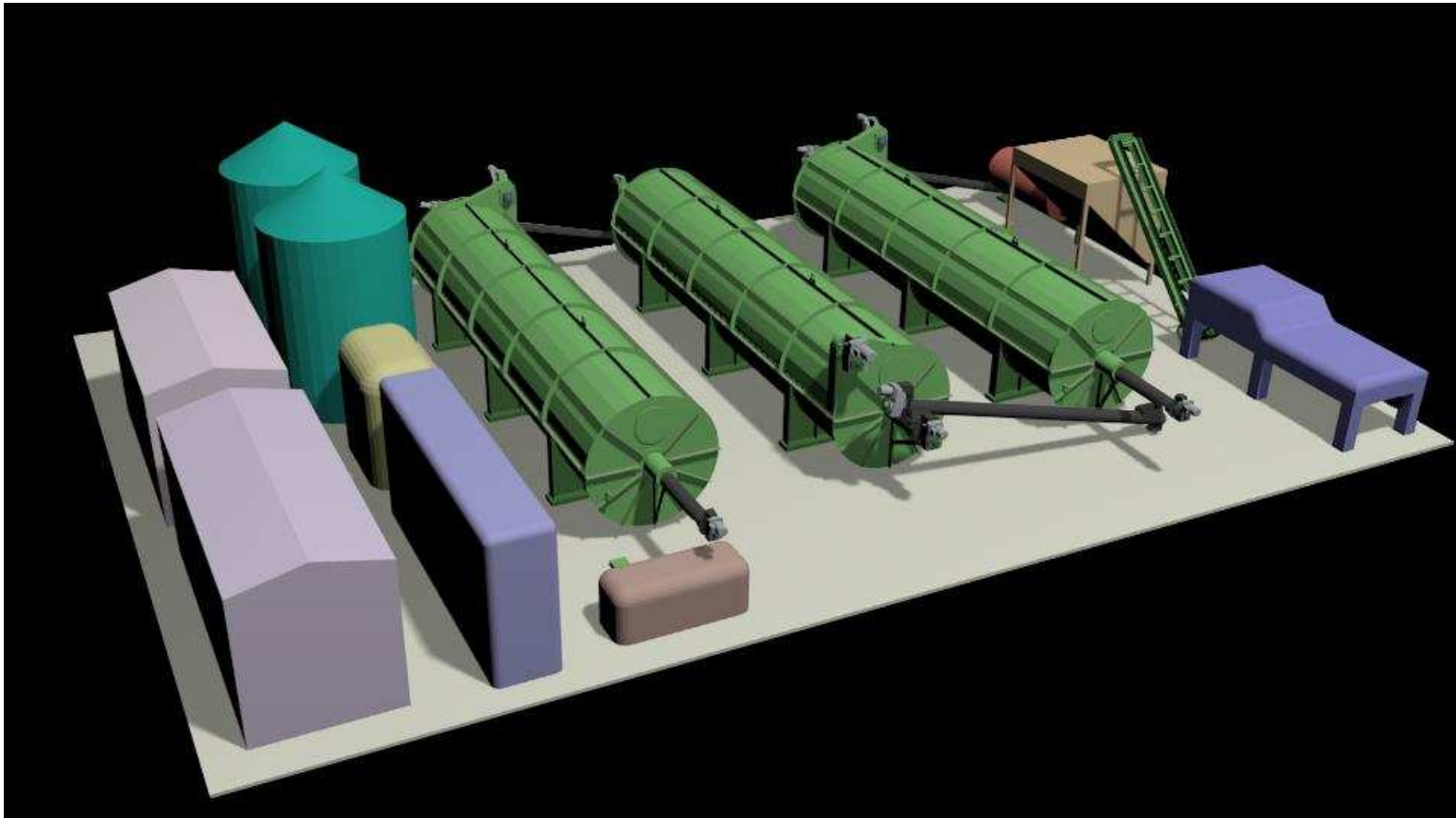
Sustainable Supply Chain - Broiler Production



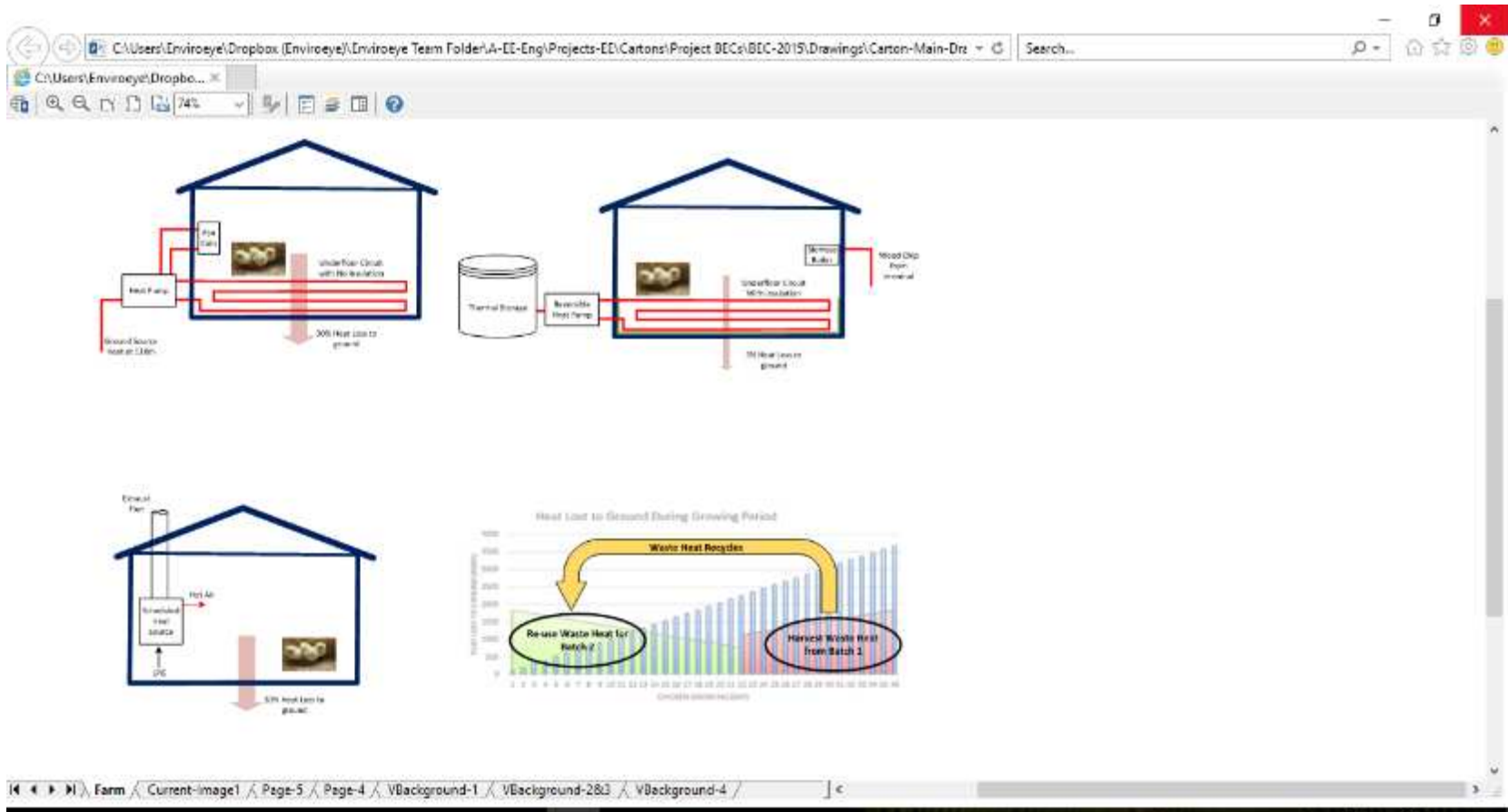
Harper Adams University – AD Digester (Mini)



Ideal Target @ AD-Dry [100% Poultry Litter]



Feed Energy – Recycle – Chick Heat





AGROCYCLE
for a circular economy



This project has received funding from the European Union's Horizon 2020 Research and Innovation programme under grant agreement No. 690142 in collaboration with the People's Republic of China and the Hong Kong Government